



NCAUG
NORTH CAROLINA ARCGIS USERS GROUP INC.

2025 NCAUG ANNUAL CONFERENCE

OCTOBER 1-3, 2025 | ASHEVILLE, NC
EMBASSY SUITES BY HILTON, DOWNTOWN ASHEVILLE

CONFERENCE AGENDA PACKET

In partnership with:

EXPLORE
ASHEVILLE

POWERED BY

Buncombe County Tourism
Development Authority

ncaug.com



NCAUG
NORTH CAROLINA ARCGIS USERS GROUP INC.

WELCOME TO THE 2025 NCAUG ANNUAL CONFERENCE

FROM THE PRESIDENT'S DESK...

Welcome to the 2025 Annual North Carolina ArcGIS Users Group (NCAUG) Conference in Asheville, North Carolina. I want to give a special thank you to our host city this year, our hearts and minds have been with you during the tragic events and the recovery from Helene. Our theme this year is **"From Storms to Solutions"** and you North Carolina have become the epidemic of this! From attaining an "A" for GIS data in 2023 from NSGIC to using this GIS to assist in such a disaster and the recovery.

This year's Presidents Award highlights a prime example of this mantra and shows how GIS was used for communication, coordination, and restoring a community. Making sure that through resilience and innovation there are sunny skies ahead. Our Keynote speaker is Sunny Flemming who is a resident of Asheville and Director of Environment, Conservation & Natural Resources Solutions within ESRI. She experienced Helene firsthand and has a fresh insight into how GIS is a key "uniter" in our community.

Throughout 2025 the NCAUG board has diligently meet and planned several symposiums to continue our growth as an organization. Our Board is made up of 15 dedicated professionals that volunteer their time and energy to making sure that our membership is provided with great opportunities. These Board members pay the same annual fees, conference fees, and pay for their hotel here at conference. All that to say that I want to personally thank them for all that they do continually to keep NCAUG going. Additionally, those of you that have stepped up and served on a committee, you have also kept NCAUG thriving. With a membership of 450 of which 50 are students we would not be able to maintain the events that we do. If you are interested in becoming a board or committee member, I would suggest that you find a current one and discuss with them your thoughts and ask questions.

Year after year we are fortunate to have the support of a growing list of sponsors. Some of this years Sponsors are new to us, but most have continuously been a part of our organization. Please be available to stop by and say Hi. This is also a great way to network with the professionals within our geospatial world and see what is the best and most used technology and processes out there today.

This year at the NCAUG conference you can look forward to some of the most intriguing and thought-provoking presentations. We have our First-Time attendee presentation at the start of the conference for all our new attendees, please come and meet us! This is a great way to start the conference out with a familiar face and a new friend! Take a look at our workshops that are offered before the conference. The registration fee for these workshops goes directly to fund our Scholarship's. The instructors have graciously volunteered their time for the workshops and are at the top of their field. The Hands-on Learning Lab is a great way to have some self-paced learning with an ESRI instructor. You won't want to miss out on our after-hours socials as this is a great way to network and our Annual Golf outing which kicks off our conference week! Stay up to date by checking our conference page on the website diligently.

As always, we look forward to meeting up with our friends at the 2025 Annual NCAUG conference and we hope that you do as well! See ya in Asheville!

Sincerely,

Jackie Dillon, GISP

NCAUG President, 2025

Utilities Specialist – Town of Apex, NC



2025 NCAUG EXECUTIVE BOARD



PRESIDENT

Jackie Dillon, GISP
Town of Apex, NC



VICE-PRESIDENT

Rick Wallace
NV5 Geospatial



TREASURER

Richard Fogleman, GISP, CFM
AECOM



SECRETARY

Peter Erlenbach, MGIST
Esri



NCAUG BOARD MEMBERS



Matt Helms
City of Charlotte, NC



Michelle Lopez, GISP, AICP
STV Inc.



Garrett Shields, GISP, CFM
WSP USA



Meredith Stull, GISP
Durham County, NC



Khalil McGruder
Stewart



Brian Ross
Brunswick County, NC



Greer Templar
Wilmington Urban Area MPO



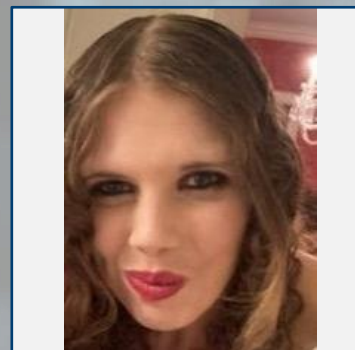
Lucy Tundel
Maternal Engineering
i.e. "Super Mom"



Josh Norwood, CGCIO
Pender County, NC



Sangwoo "Marty" Sung, Ph.D.
NCDOT



Shaylee Bowen, GISP
MapForsyth



CONFERENCE HIGHLIGHTS

Special Keynote Speaker – Sunny Fleming, Esri

Sunny Fleming is the Director of Environment, Conservation, and Natural Resources Solutions at Esri. With a background in plant ecology and botany, she has applied location intelligence throughout her career; from monitoring rare species in the field to helping state parks manage recreational assets across their systems. Through collaboration with users, partners, and colleagues, she fosters a community of environmental professionals who use GIS to solve some of our world's most pressing challenges. She lives in Asheville, NC with her husband and two dogs, and numerous bicycles.



Esri Hands-On Learning Lab (French Broad Room #3)

We're excited to once again feature the Esri Hands-On Learning Lab at the conference this year! This gives our attendees an excellent opportunity for learning, asking questions and exploring Esri software.

The Esri Hands-On Learning Lab will be open during the following hours:

- **Wednesday 9:00am – 12:00pm**
- **Thursday 9:00am – 5:00pm**



NCAUG Awards Ceremony

NCAUG continues our annual tradition of awarding excellence in the GIS community. During the conference plenary session, please join the NCAUG Board in recognizing the talented and dedicated GIS professionals making a difference everyday in North Carolina!

More Conference Events!

3rd Annual NCAUG Golf Tournament – Join the fun on the greens and participate in our annual golf outing on Tuesday Sept. 30th from Noon to 5:00pm at the Mimosa Hills Golf Course.

Opening Night Party – Join us at One STOP at the Asheville Music Hall on Wednesday night from 6:00 – 8:00pm for an evening of food, fun and networking with your fellow GIS peers! Full meal and beverages will be provided.

1st Time Attendee Session – Is this your 1st time at the NCAUG Conference? Join us Thurs. morning at 8:00am for a special welcome session for new attendees.

Thursday Night Sponsor Social – Spend the evening mingling with our awesome sponsors and your peers! From 5:30-7:30pm, we'll have music, drinks and light hors d'oeuvres...so fancy!

DOOR PRIZES THROUGHOUT THE CONFERENCE!



2025 NCAUG SCHOLARSHIP WINNERS

Congratulations to our 2025 NCAUG Scholarship recipients!



Presenting Wednesday at 3:30pm!

Natasha Kroll – UNC Charlotte (Undergraduate)

Natasha is currently a Senior at UNC-Charlotte, double majoring in Earth and Environmental Science and Data Science with a minor in Statistics. UNC-Charlotte is where she took her first GIS course, and found it was a perfect combination of her passion for environmental science with the technology of data science. She plans to continue her use of GIS while completing her Master's and hopes to apply it to emissions and carbon capture. Her favorite activities aside from research are cooking with friends and hiking.

Natasha Kroll's submission is titled ***"High Resolution Mapping of Human Activity."***



Presenting Wednesday at 3:30pm!

Caleb Blackburn – Appalachian State (Graduate)

Caleb is a master's student in the Geography and Planning department at Appalachian State University, where he also earned my bachelor's degree. His research explores how climate impacts human health, with a focus on extreme climate events. He uses Geographic Information Systems to study spatial patterns and identify vulnerable communities. He is especially interested in how mapping and data can support public health and emergency planning. His goal is to work in disaster response or resource allocation, helping agencies and communities prepare for and respond to the growing challenges of climate-related events.

Caleb Blackburn's submission is titled ***"Spatial Disparities in Disaster Recovery: Assessing Flood Risk, Resilience, and Federal Aid Distribution in Western North Carolina After Hurricane Helene."***



DIAMOND SPONSORS

AECOM



LANGAN

N|V|5
GEOSPATIAL





PLATINUM SPONSORS



Engineering
& Design



Dewberry



EAGLEVIEW





GOLD SPONSORS



EDUCATION SPONSORS





**Pre-Conference Workshops require separate registration from main conference.*

\$175 – Half Day Workshop

\$350 - Full Day Workshop

PRE-CONFERENCE WORKSHOPS

North Carolina: Decisions, Data, Standards, and Coordination.

Presented By:



Hope Morgan, PLS, GISP, CFM
(AECOM)



Colleen Kiley, GISP, CFM
(NC CGIA)



Natalie Walton Corbett
(City of Greenville, NC)



Sallie Vaughn, GISP
(Person County, NC)

Tuesday September 30th, 8:00am - 12:00pm (Half Day) – French Broad Conference Center Room #1

Workshop Description

We all have a job, and we make decisions based on the needs of that job. We all have data which is created based on the decisions regarding the needs of our job. From GIS tech to surveyor to tax assessor to legislator we are often trying to make round data fit in a square hole. This workshop will take the time to discuss how we gather data, how decisions are made to create that data, how data is shared, how it is all correct, and all wrong, all at the same time. We will discuss how to coordinate data creation, plans for data use in the future, partnering to determine standards and requirements and where we need to think through what our data will mean to others.

This workshop will include an overview of working through Local, state and federal datasets and partners

- Where to find data in NC and throughout the nation
- How to create data standards and the partners in the process and
- Where to find all the people we need to make all this work happen.

Speaker Bios

Hope Morgan has been working in the remote sensing and GIS field for 28 years. As the Technical Excellence Lead for Compass federal contracting withing AECOM as well as the Geospatial Delivery Service Manager for the eastern region her responsibilities include Survey, Floodplain mapping production, Terrain creation, GIS and CNMS. NC work includes the Flood Resiliency Blueprint with NCDEQ, Hazard mitigation work and response to Hurricane Helene for NCEM. She has worked with several organizations including NCAUG, the NC Chapter of ASPRS, National ASPRS, and is the current Chair of the NCGICC.

Colleen Kiley has served the State of North Carolina for over 20 years through roles in natural resources, emergency management, and information technology. Her current position, as the GIS Coordination Program Manager for the N.C. Center for Geographic Information and Analysis, provides the opportunity to bring together GIS professionals across the state to tackle big issues. She holds a GISP and earned her Bachelor's degree in Geology and a Master's degree in Coastal Zone Management.

Natalie Walton Corbett has been involved in North Carolina's GIS local government sector for 17 years after earning a Bachelor of Science in Geography from Appalachian State University. She currently holds the position of GIS Coordinator for Greenville, North Carolina, and serves as a Board Member of the Geographic Information Coordinating Council (GICC) and Chair of the Local Government Committee. In these roles, she facilitates collaboration between the State of North Carolina and its local government GIS community statewide. Natalie continues to work on North Carolina's disaster response GIS solutions and co-founded HurriUp in 2019 to provide local governments with collaboration, mutual support, and training.

Sallie Vaughn joined Person County Government in 2014 with experience in both the public and private sectors. She has held positions at all levels of GIS and leans on that experience to lead as Person County's first GIS Director. Her team received the 2023 G. Herb Stout award for innovative use of GIS by small local governments in North Carolina presented by NCDIT's Center for Geographic Information & Analysis (CGIA). Sallie enjoys using GIS to streamline government operations, enhance transparency, and encourage enterprise-wide data sharing. She holds a GISP and earned her Bachelor's degree in Anthropology and a Master's degree in Geography, both from East Carolina University.



**Pre-Conference Workshops require separate registration from main conference.*

\$175 – Half Day Workshop

\$350 - Full Day Workshop

PRE-CONFERENCE WORKSHOPS

Making the move to ArcGIS Pro

Presented By:



Tripp Corbin, MCP, GISP
(Cultivate Geospatial Solutions)

Tuesday September 30th, 8:00am - 5:00pm (Full Day) – French Broad Conference Center Room #2

Workshop Description

This hands-on workshop is designed specifically for ArcMap users who are ready to transition to ArcGIS Pro. Through a combination of lectures, live demonstrations, and guided exercises, participants will gain the skills and confidence needed to navigate and utilize ArcGIS Pro effectively.

Key Topics Covered:

- **Understanding the Ribbon Interface:**
 - Learn how ArcGIS Pro's modern ribbon-based interface differs from ArcMap's traditional layout. Discover how to access tools, customize views, and streamline your workflow.
- **Editing Spatial and Tabular Data:**
 - Explore the enhanced editing environment in ArcGIS Pro. Participants will practice editing both spatial features and attribute tables, with a focus on best practices and new capabilities.
- **Introduction to Arcade:**
 - Get started with Arcade, Esri's expression language used across the ArcGIS platform. Learn how to write simple expressions for labeling, symbology, and field calculations.

Format:

- Lectures to introduce concepts and workflows
- Live demonstrations to show real-time application
- Hands-on exercises to reinforce learning and build proficiency

Whether you're migrating a single project or transitioning your entire workflow, this workshop will equip you with the foundational knowledge to make the move to ArcGIS Pro with confidence.

Speaker Bio

Tripp Corbin is a seasoned GIS professional with over 28 years of experience in the geospatial industry. He holds numerous GIS and IT certifications, including several from Esri, and is widely recognized for his expertise in ArcGIS technologies. Tripp is the author of four books on ArcGIS Pro and has taught GIS courses and workshops across the United States, Canada, and Australia. He currently serves as President of the Georgia Geospatial Association, is a member of the GISCI Board, and is a Past President of the GIS Professional Network (GPN). Tripp's teaching style blends deep technical knowledge with practical, real-world application, making him a sought-after instructor for professionals transitioning to modern GIS platforms.



**Pre-Conference Workshops require separate registration from main conference.*

\$175 – Half Day Workshop

\$350 - Full Day Workshop

PRE-CONFERENCE WORKSHOPS

A Knowledge Workers Guide to Visual Management

Presented By:



Wendy Peloquin, GISP (Avineon)

Wednesday Oct. 1st, 8:00am - 12:00pm (Half Day) – French Broad Conference Center Room #2

Workshop Description

Visual Management is the application of Lean and Agile practices to build new ways of working for individuals and teams on-the-fly (Modus Institute).

We take a system thinking approach to the complexities of new/unexplored work, (mis)understanding, decision-less meetings, interruptions, prioritization, communicating decisions and difficulty of collaboration. Through this highly interactive workshop, we will introduce the system of communications, system of meetings and the system of doing the right work at the right time. We will conduct practical exercises that focus on visualizing our work and limiting our work in progress. We will look at value stream mapping as an effective visualization and how to put those visualizations into action. There will be exercises to harvest ideas and tackle sticky problems. Ultimately, we will turn learning into action items.

Learning Outcomes:

- Visualize your work
- Limit your work in progress
- Understand your work
- Filter complexity
- Turn your visualization into action

Speaker Bio

Wendy Peloquin, GISP is the Director of Commercial Sales Operations at Avineon with over 17 years of industry experience. She earned a B.S. in Geography and a Certificate in GIS from UGA and a Masters degree in GIS Administration from tUWF. Wendy is an active member of the Geospatial Professional Network (GPN), formerly known as URISA. She serves as a facilitator for the GIS Leadership Academy (GLA) and Advanced GLA. She is also currently serving as President-Elect.



CONFERENCE AGENDA

Tuesday, September 30th

7:30am – 5:00pm	Registration & Info Desk Open	
8:00am – 12:00pm	French Broad 1	Pre-Conference Workshop North Carolina: Decisions, Data, Standards, and Coordination. Instructors: Hope Morgan, PLS, GISP, CFM (AECOM) Colleen Kiley, GISP, CFM (NC CGIA) Natalie Walton Corbett (City of Greenville, NC) Sallie Vaughn, GISP (Person County, NC)
	French Broad 2	Pre-Conference Workshop Making the move to ArcGIS Pro (Part 1 – Full Day Workshop) Instructor: Tripp Corbin, MCP, GISP (Cultivate Geospatial Solutions)
12:00 – 1:00pm	Lunch on your own	
12:00 – 5:00pm	3rd Annual NCAUG Golf Social NCAUG Board Reps: Rick Wallace, Josh Norwood & Peter Erlenbach	
1:00pm – 5:00pm	French Broad 2	Pre-Conference Workshop Making the move to ArcGIS Pro (Part 2 – Full Day Workshop) Instructor: Tripp Corbin, MCP, GISP (Cultivate Geospatial Solutions)



CONFERENCE AGENDA

Wednesday, October 1st

7:30am – 1:00pm	Registration & Info Desk Open		
8:00am – 12:00pm	Exhibitor Setup – Conference Hallway & Blue Ridge Ballroom 4		Esri Hands-On Learning Lab Open French Broad 3 9:00am - 12:00pm
8:00am – 12:00pm	French Broad 2	<p>Pre-Conference Workshop</p> <p>A Knowledge Workers Guide to Visual Management</p> <p>Instructor: Wendy Peloquin, GISP (Avineon)</p>	
12:00 – 1:00pm	Lunch on your own		

Conference Plenary Session – Blue Ridge Ballroom 1 - 3

1:00 – 1:30pm	Welcome Session & NCAUG Business Meeting Jackie Dillon- NCAUG President	Exhibit Hall Open Ballroom Hallway & Blue Ridge Ballroom 4 1:00pm – 5:00pm
1:30 - 1:45pm	NCAUG Awards Presentation (Scholarships & President’s Award) Jackie Dillon & Dr. Marty Sung (NCAUG Awards & Scholarship Committee Chairs)	
1:45 - 2:30pm	Sponsor Lightning Talks <i>Thanks to our many sponsors!</i>	
2:30 - 3:00pm	2025 NCAUG President’s Award Recipient Presentation A Storm of GIS Needs: The Use of GIS for Hendersonville Water Restoration After Hurricane Helene Ben Allamong (City of Hendersonville, NC)	
3:00 – 3:45pm	Break : Blue Ridge Ballroom 4	
3:45 – 4:45pm	Special Keynote Address Sunny Flemming (Esri) 	
4:45 – 5:00pm	Plenary Closing & Conference Info NCAUG Board	
6:00 – 8:00pm	Opening Night Party – One STOP at the Asheville Music Hall (55 College St.)	





CONFERENCE AGENDA

Thursday, October 2nd

Morning Sessions

7:30am – 1:30pm	Registration & Info Desk Open	
7:00 – 8:00am	Breakfast Buffet: Blue Ridge Ballroom 4	
Breakout Sessions	Track 1 Blue Ridge Ballroom 1 Moderator: Laura Coppola	Track 2 Blue Ridge Ballroom 2 & 3 Moderator: Hope Morgan
8:00 – 8:30am	Performing ArcGIS Experience Builder Deployments & Public Notification Instant Apps For Stormwater Inventory Daisy Ryan (Bolton & Menk, Inc.) <i>Diamond Sponsor</i>	First Time Conference Attendees Meetup NCAUG Board
8:30 – 9:00am	GeoAI / AI Assistants Carl Flint (Esri)	Panel Discussion: GIS Careers, Resumes & Challenges Kristin Johnson, Tony Spicci, Jackie Dillon & Garrett Shields
9:00 – 9:30am		The Pre-GISP Program Tony Spicci (GIS Certification Institute)
9:30 – 10:00am	2025 NCAUG Scholarship Recipient Natasha Kroll (NC State University)	From Coursework to Clients: A Year of Growth in GIS Consulting Miranda Darwin (STV Inc.)
10:00 – 10:30am	Break : Blue Ridge Ballroom 4	
Breakout Sessions	Track 1 Blue Ridge Ballroom 1 Moderator: Will Rumley	Track 2 Blue Ridge Ballroom 2 & 3 Moderator: Amy Barron
10:30 – 11:00am	Riparian Tree Cover Loss from Hurricane Helene Along an Urban to Rural Gradient in Asheville, NC Diane Styers (Western Carolina University)	Who Is a GISP? A Guide to Becoming a Certified Geospatial Professional Tony Spicci (GIS Certification Institute)
11:00 – 11:30am	GIS-based Damage Assessments following Helene: A Unique Collaboration Greg Dobson (UNC Asheville's NEMAC)	GIS Management for Newbies: Sparking Innovation and Success within a GIS Team Garrett Shields (WSP)
11:30 – 12:00pm	Done Mapping After Hurricane Helene Wayne Bailey (Blue Ridge Mountain Drones)	A Professional Network: Your most critical resource for career growth and technical support Tripp Corbin (Cultivate Geospatial Solutions)
12:00 – 1:00pm	Lunch Buffet: Blue Ridge Ballroom 4	

Esri Hands-On Learning Lab Open
French Broad 3

9:00am – 5:00pm

Exhibit Hall Open
Ballroom Hallway & Blue Ridge Ballroom 4

8:00am – 7:30pm



CONFERENCE AGENDA

Thursday, October 2nd

Afternoon Sessions

7:30am – 1:30pm	Registration & Info Desk Open	
Breakout Sessions	Track 1 Blue Ridge Ballroom 1 Moderator: Natasha Jacob	Track 2 Blue Ridge Ballroom 2 & 3 Moderator: Harold Rempel
1:00 – 1:30pm	ArcGIS Pro – Beyond the Basics Peter Erlenbach (Esri)	Drones – (Thinking) Out of the Box Hunter Ardrey (Duncan Parnell) <i>Diamond Sponsor</i>
1:30 – 2:00pm		Answering the Call... Rick Wallace (NV5 Geospatial) <i>Diamond Sponsor</i>
2:00 – 2:30pm	Living with Water: Applying Geospatial Data for Community Flood Resilience Devon Eulie (UNC Wilmington)	Data Governance Kent Rothrock (Aveion) <i>Diamond Sponsor</i>
2:30 – 3:00pm	2025 NCAUG Scholarship Recipient Caleb Blackburn (Appalachian State University)	Guarantee the Success of Your GIS Program and Career Jeff Stewart (Geographic Technologies Group) <i>Diamond Sponsor</i>
3:00 – 3:30pm	Break : Blue Ridge Ballroom 4	
Breakout Sessions	Track 1 Blue Ridge Ballroom 1 Moderator: Ike Canady	Track 2 Blue Ridge Ballroom 2 & 3 Moderator: Kimberly Sparks
3:30 – 4:00pm	Everyday Emergencies: GIS and NowGen911 Brian Ross (Brunswick County, NC Sheriff's Office)	Pedals & Platforms: A Spatial Look at Bike and Subway Access in Brooklyn Johnny McGlone (STV Inc.) <i>Diamond Sponsor</i>
4:00 – 4:30pm	Certificate of Occupancy Dashboard and Population Estimates – Tracking Development Progress and Population Growth Jenny Jessen (Town of Apex, NC)	Modernizing Moore County Tax Tools: Migrating ArcMap Toolbars to ArcGIS Pro Add-Ins & Attribute Rules Ben Masters (Blue Raster)
4:30 – 5:00pm	Modernization of Guilford's Foreclosure Application Marlena Isley & Mitchell Byers (Guilford County, NC)	Maximizing NC Statewide LiDAR: Machine Learning, Change Detection and GIS Derivatives Mike Baranowski (SAM) <i>Diamond Sponsor</i>
5:30 – 7:30pm	Sponsor Party – Hors D'oeuvres, Drinks, Music, Prizes Ballroom Hallway & Blue Ridge Ballroom 4	

Esri Hands-On Learning Lab Open
French Broad 3

9:00am – 5:00pm

Exhibit Hall Open
Ballroom Hallway & Blue Ridge Ballroom 4

8:00am – 7:30pm



CONFERENCE AGENDA

Friday, October 3rd

8:00 – 9:00am	Breakfast Buffet: Blue Ridge Ballroom 4	
Breakout Sessions	Track 1 Blue Ridge Ballroom 1 Moderator: Gwen Ford	Track 2 Blue Ridge Ballroom 2 & 3 Moderator: Tom Tiner
8:30 – 9:00am	The Community Partnership Mapping Initiative: Using GIS to connect families with resources Ryan Cooper (Wake County Public School System)	Tips for Success in Developing Geospatial Deep Learning Models Colin Flynn (Dewberry)
9:00 – 9:30am	Using ArcGIS Indoors for Asset Management Savannah Thomson & Nick Haffele (Chatham County, NC)	Stormwater BMP Inspection Utilizing Drone Technology Brent Reeves & Morgan Jones (KCI)
9:30 – 10:00am	The Why and How of Moving to UN: The Municipal Approach Wendy Peloquin (Avineon)	Exploring Climate - Risk Analysis Michael Blair (Innovate Inc.)
10:00 – 10:30am	Break : Blue Ridge Ballroom 4	
Breakout Sessions	Track 1 Blue Ridge Ballroom 1 Moderator: Will Corbett	Track 2 Blue Ridge Ballroom 2 & 3 Moderator: Mark Bratcher
10:30 – 11:00am	From Paper to Priorities: Using GIS to Guide Neighborhood Revitalization Andrew Clark (Colliers Engineering)	Leveraging Aerial LiDAR and Photogrammetry for Slope Management and Disaster Response Paul Rossi (Nine Ten Drones)
11:00 – 11:30am	Streamlining NC Department of Transportation's (NCDOT) Preconstruction Requirements with Digital Tools Danielle Mir (NCDOT - Environmental Analysis Unit)	Landslide Detection Using Deep Learning and Geographic Information Systems: A case Study of Western North Carolina Gazali Agboola & Dr. Leila Hashemi Beni (NC A&T University)
11:30 – 12:00pm	Spatial Analysis of Traffic Volume and Air Quality in North Carolina between 2019 and 2020 Daniel Nduka (NC Central University)	Mapping Yesterday's History with Tomorrow's Technologies Timothy Mulrooney (NC Central University)
12:00 – 12:15pm	Break : Blue Ridge Ballroom 4	
12:15 – 1:00pm	Conference Closing Session – Blue Ridge Ballroom 1 - 3 NCAUG Board	

Interested in learning more about **GIS** and **ArcGIS SOFTWARE?**

Take a self-paced lesson at the **Hands-On Learning Lab**.

The Hands-On Learning Lab is a dedicated space to take *free lessons on a variety of GIS and ArcGIS topics*. Each self-paced lesson takes about **one hour to complete** and includes conceptual information and step-by-step software exercises.

We provide laptops and the ArcGIS software needed to complete each lesson. Esri instructors are available to assist with lesson selection and answer any questions you may have.

LESSON LIST

Getting Started with ArcGIS

- Exploring ArcGIS
- Getting Started with ArcGIS Online
- Getting Started with ArcGIS Pro
- Getting Started with GIS

Explore a Focused Topic

- Adding Location-Based Data to a Map
- Analysis in ArcGIS Online
- Automating Workflows Using Python
- Creating Web Apps Using ArcGIS Experience Builder
- Data Exploration and Visualization in ArcGIS Online
- Data Pipelines in ArcGIS Online
- Exploratory Image Analysis in ArcGIS Pro
- Discovering Patterns Using ArcGIS Insights
- Exploring ArcGIS Field Maps
- Getting Started with Arcade
- Getting Started with ArcGIS Business Analyst
- Getting Started with ArcGIS Notebooks
- Getting Started with ArcGIS Survey123
- Getting Started with ModelBuilder
- Integrating CAD and BIM Data with ArcGIS

- Managing Parcels and Land Records Using the Parcel Fabric
- Mapping Clusters with ArcGIS Pro
- Mapping in ArcGIS Online
- Monitoring Activity Using ArcGIS Dashboards
- Performing Deep Learning in ArcGIS Online
- Telling Stories with ArcGIS StoryMaps





NCAUG
NORTH CAROLINA ARCGIS USERS GROUP INC.

THANK YOU FOR ATTENDING!