

Transforming Telecom with Geospatial Solutions



You **build**, **maintain**, and **operate** the critical telecom infrastructure for high-bandwidth, low-latency networks spanning our nation. Our geospatial solutions assist your team by providing you data and solutions to help you do your job **better**, **faster**, and **more accurately**. Upgrade to a Digital Twin from costly and less accurate manual processes. We perform comprehensive asset extraction (aerial and buried). With reliable data and tools at your fingertips, you'll be able to focus on the networks.

Our Process

Tailored to Meet Your Project Need



Identify

- Data Dictionary
- AOI Definition
- Collection Approach

Source Data

- Mobile Mapping
- Backpack Lidar
- Field Survey
- Boots on the Ground
- Aerial Lidar

Integrate

- Enterprise Systems
- Mobile Apps
- Custom Development
- Cloud Hosting

Visualize

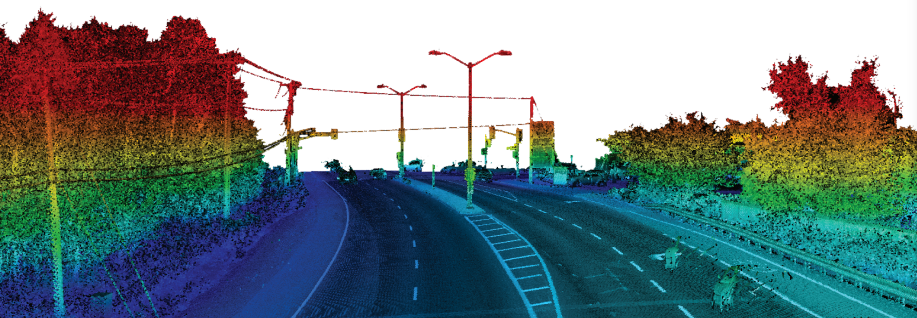
- GIS Format
- CAD Format
- Digital Twin
- 360° Imagery
- Dashboards

Empower

- Improve Efficiency
- Maximize ROI
- Data-driven Decision Making
- Multiple Stakeholders

Benefits of Mobile Mapping

- ▶ **Collection at highway speed**
- ▶ **Extremely safe**
- ▶ **Basis for Digital Twin**
- ▶ **Additional assets can be extracted from source data**
- ▶ **High accuracy**
- ▶ **Rapid deployment**
- ▶ **Nationwide coverage**
- ▶ **Lidar and 360° imagery**



Why Continental Mapping?

We're a trusted, experienced partner to those working in the telecom industry. We understand project requirements unique to telecom, so you can rely on us to supply data and inputs you need, so you can focus on what you do best.

8+
Years of
Mobile Mapping
Experience

Over
200k
Miles of
Roadway Data
Collected

Over
5 million
Assets Extracted