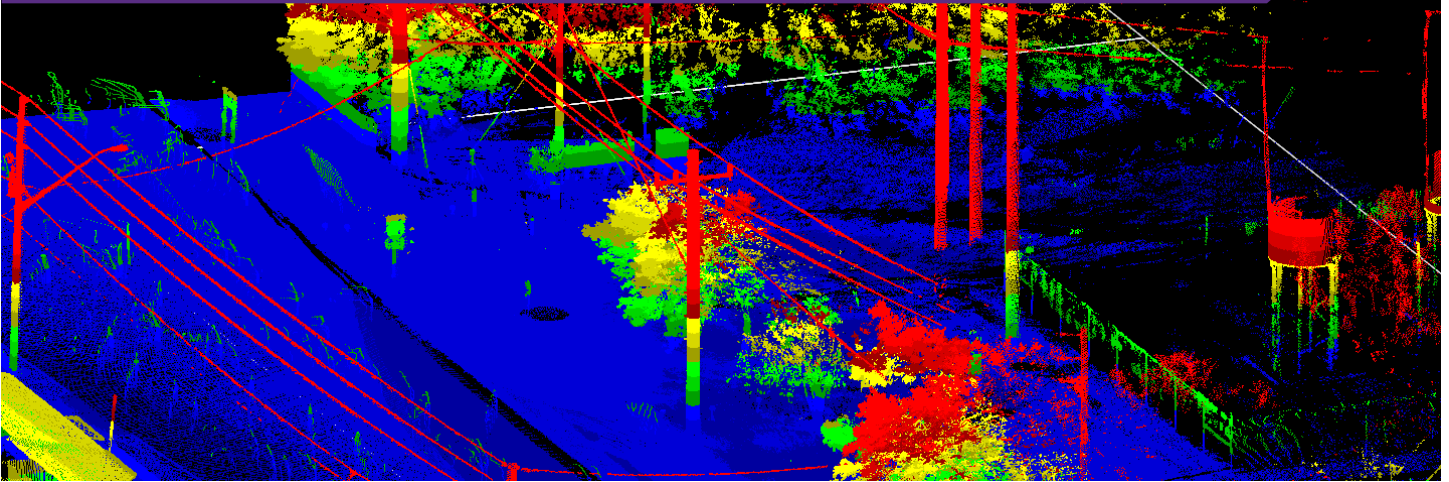


ADVANCED GEOMATICS



McKim & Creed, Inc., is one of the largest, most technically advanced full-service geomatics firms on the East Coast. Ranked first by ENR Southeast, we apply the power of geomatics solutions to benefit our clients. As the industry evolves, McKim & Creed has maintained a commitment to the advancement of the industry by providing cutting-edge technology and cost-effective data collection.

Our team provides airborne and mobile LiDAR/scanning, unmanned aerial systems, subsurface utility engineering and hydrographic and conventional surveying services for the energy, transportation, federal, land development, water and building markets.

We offer a diverse portfolio of advanced imaging and remote sensing technologies, backed by powerful modeling, visualization and GIS tools. These services have value in various applications—from land-use planning to disaster preparedness. We've successfully delivered countless projects for energy, transportation, environmental and government clients.

N. CAROLINA

Charlotte
Raleigh
Wilmington
Asheville

S. CAROLINA

Charleston

FLORIDA

Clearwater
Jacksonville
Tampa
Daytona Beach
Orlando
DeLand
Pensacola

Fort Myers
Sarasota

GEORGIA

Sugar Hill

TEXAS

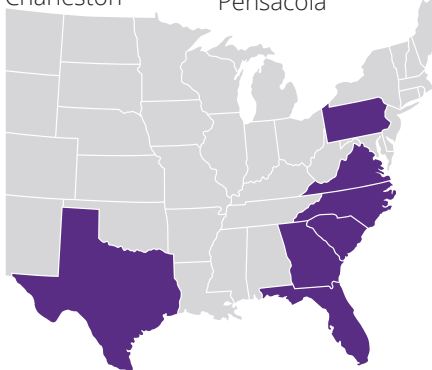
Austin
Dallas-Fort Worth
Houston

VIRGINIA

Hampton Roads

PENNSYLVANIA

Harrisburg
Pittsburgh



OUR SERVICES

MARKETS

TRANSPORTATION
LAND DEVELOPMENT
ELECTRICAL UTILITY
WATER
STATE/LOCAL
INSTITUTIONAL
EDUCATION
HEALTHCARE
FEDERAL

SERVICES

CONVENTIONAL LAND
SURVEYING
SUBSURFACE UTILITY
ENGINEERING (SUE)
LIDAR AND
PHOTOGRAMMETRY
UNMANNED AERIAL
SYSTEMS
3D LASER SCANNING
MODAC MOBILE DATA
COLLECTION®/MOBILE
LIDAR
3D MODELING
HYDROGRAPHIC
SURVEYING
UTILITY TRANSMISSION
SURVEYS
CONSTRUCTION
STAKING
ASSET MAPPING
GIS SERVICES



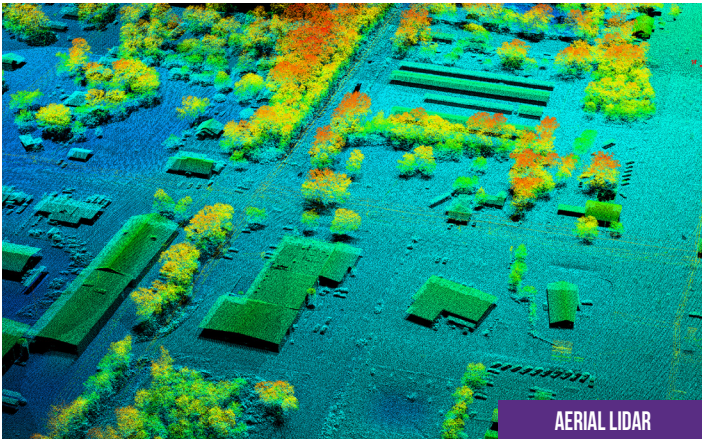
SUBSURFACE UTILITY ENGINEERING

We specialize in the accurate location of underground utilities to help engineers and contractors alike manage the inherent risks associated with underground utilities.



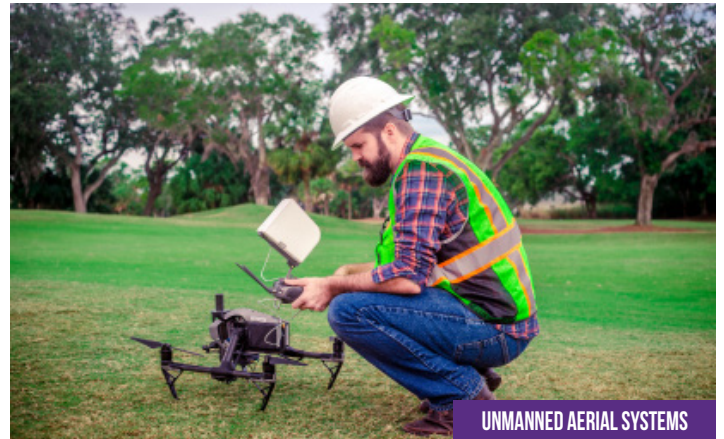
3D SCANNING

Our applications for 3D laser scanning are robust, and include as-built documentation, industrial plant maintenance, volume calculations, ALTA, bridges and tunnels, retrofit and rehabilitation projects, new equipment installations, and manufacturing and process inspections.



AERIAL LiDAR

From wide-area mapping to detailed aerial surveys for routing and design, our remote sensing teams offer a complete collection of LiDAR mapping technologies.



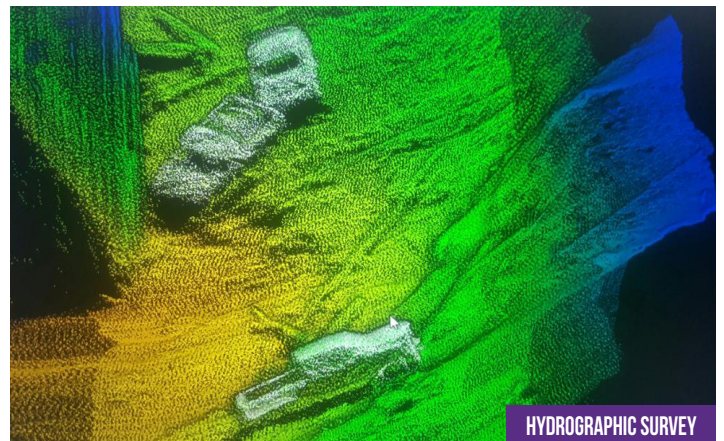
UNMANNED AERIAL SYSTEMS

McKim & Creed is committed to the advancement of the surveying and mapping industry by providing a cost-effective technology. We use UAS systems approved by federal government.



MOBILE LiDAR (MODAC)

Mobile scanning is cost-effective. Data can be collected traveling at posted speeds at up to 1,000,000 points per second. McKim & Creed are experts in this field of technology, providing this service to DOTs across the country.



HYDROGRAPHIC SURVEY

Our hydrographic surveyors provide the tools needed to survey bridges, natural disaster data collection and more. Our extensive resources include various survey vessels ranging from 10-feet to 28-feet.