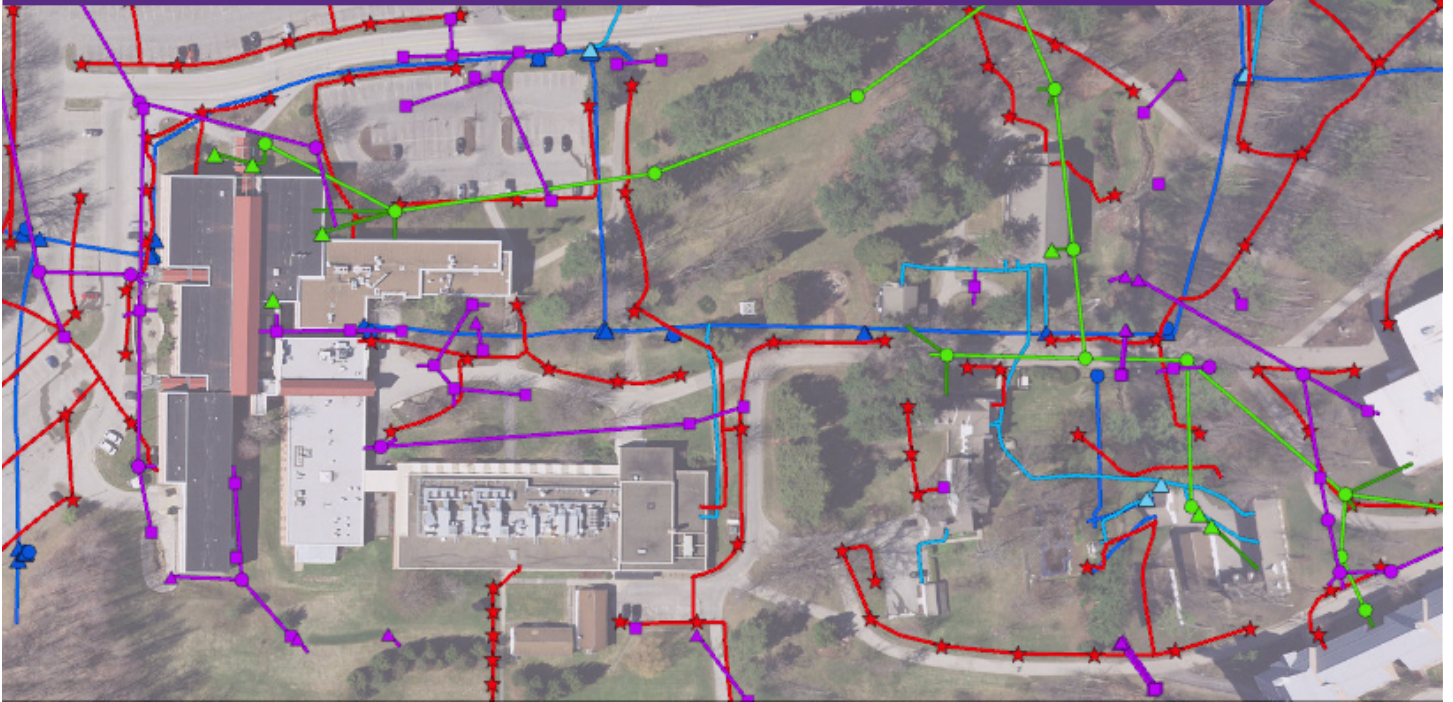


# GEOGRAPHIC INFORMATION SYSTEMS



Geographic Information Systems (GIS) provides the framework to organize, interconnect, analyze and understand your organizations assets. GIS provides you valuable insight into your organization affording you the ability to make more informed decisions.

GIS comes in all shapes and sizes, and with many cost-effective options available, McKim & Creed can help you tailor the solution(s) to best suit your needs. Today's GIS is no longer tied to a few users at their desktops, it's versatility and ease of use enables advanced capabilities, and your valuable data to be put into the hands of your entire organization.

McKim & Creed, Inc. can help you navigate the path to implementing, enhancing, and maintaining GIS throughout all phases and levels of your program's lifecycle. Set up a meeting with our experienced GIS Professionals today to learn more about how McKim & Creed, Inc can assist you and you organization with Geographic Information Systems (GIS).



## OUR SERVICES

**ENTERPRISE GIS  
PLANNING, DESIGN/  
ARCHITECTURE, AND  
IMPLEMENTATION**

**ASSET MANAGEMENT  
IMPLEMENTATION**

**GIS NEEDS  
ASSESSMENT AND GIS  
IMPLEMENTATION  
PLAN**

**ARCGIS ONLINE  
IMPLEMENTATION  
AND ADMINISTRATION**

**GEODATABASE DESIGN**

**DATA CONVERSION  
AND MIGRATION**

**DATA CREATION AND  
DATA ENTRY**

**BASE MAPPING  
DEVELOPMENT**

**SURVEY GRADE  
GPS/GNSS DATA  
COLLECTION**

**UTILITY SYSTEM DATA  
COLLECTION**

**DATA ANALYSIS**

**GIS APPLICATION  
DEVELOPMENT**

**THIRD-PARTY SYSTEMS  
INTEGRATION**

**CONTINUED ON-CALL  
SUPPORT**

# FIRMWIDE SERVICES:



## GEOMATICS

- GIS
- Unmanned Aerial Services (UAS)
- Mobile LiDAR
- Land Survey
- 3D Laser Scanning
- Subsurface Utility Engineering (SUE)
- GPS/GNSS
- Hydrographic Survey



## PLANNING, DEVELOPMENT, NATURAL RESOURCES

- Master Planning
- Landscape Architecture
- Site/Civil Engineering
- Stormwater
- Low Impact Development (LID)
- Roadway Design



## WATER

- Water Management
- Wastewater Management
- Trenchless Technology
- Hydraulic Modeling
- Reclaimed Water
- Buried Infrastructure Renewal & Replacement
- Instrumentation & Controls (SCADA)



## BUILDINGS, ENERGY AND INFRASTRUCTURE

- Mechanical, Electrical, Plumbing
- Fire Protection
- Energy Audits
- Energy Reduction
- Sustainable Energy
- System Optimization
- Solar

## INDUSTRY RANKINGS

Rankings as per *Engineering News-Record (ENR)*



**#1**

Surveying & Mapping in the Southeast.



**#8**

Overall Design Firm in North Carolina.



**#27**

Overall Design Firm in the Southeast.



**TOP 200**

Environmental Firms in the U.S.



**TOP 500**

Design Firms in the U.S. since 1992.